



PRODUCT
CATALOG
2021

CAMERAS RECORDERS ACCESSORIES

BCS BASIC



The logo for BCS, with the letters 'BCS' in a bold, white, sans-serif font, followed by a registered trademark symbol. Below the logo, the tagline 'for professionals' is written in a white, cursive script. The background of the top left is a solid blue triangle. The rest of the background is a grayscale photograph of a modern, multi-story building with a grid-like facade of windows and balconies.

BCS[®]

for professionals

BCS is a Polish brand created in 2008. Many years of experience in the electronic security systems sector gave us the opportunity to create a unique group of products. For 13 years, the national brand of BCS is one of the most recognizable brands in the CCTV industry.

Knowing very well the needs of the market, we know what should characterize a high quality product, while maintaining a competitive price and providing the highest level of technical and design support.

Creating the BCS brand, we cooperate with companies from all over the world. We select the best solutions from the market, suggest improvements, thus making the BCS a unique product. Our partners include the largest global corporations and small local companies, offering unique solutions. We also try to popularize Polish ideas, creating in the country our own original software tailored to individual customer requirements. Moreover, we cooperate with other domestic companies providing unique technologies, which we adapt to the solutions offered by the BCS systems. In this way, we create exclusive products needed for professional installation. As a result, our solutions are unique - like a tailor-made suit - tailored to individual requirements.

The BCS offer consists of each line of CCTV products, including economy, standard and professional products dedicated to projects. The customer can find systems based on any technology, including HD-CVI, HD-TVI, AHD, ANALOG. In our offer we have both small DVRs designed for a few cameras and the most modern IP dedicated to the largest systems used in the world. All accessories necessary for installation such as: power supplies, brackets, mounting boxes are checked and tested by our engineers and introduced to the market as an integral part of the BCS system.

The BCS office and main warehouse have been built in Warsaw. The high bay warehouse is a safe base for our customers. We take care of maintaining the warehouse stock and what goes with it, constant availability of goods. In our office, we have created the following departments: Quality, Technical Support, Service, Sales, Projects and Marketing. The Quality Team controls the products supplied by each BCS Partner. The Technical Team offers assistance in case of doubts related to the installation or software of BCS products. Qualified Service personnel ensure that repairs are carried out quickly and reliably. Service is on-site in Warsaw, Poland, so we reduce unnecessary bureaucracy and respect the time of BCS users. The Projects Department supports our customers in large investments, offering assistance at every stage. The Sales Department actively advises on the selection of equipment and the creation of orders. The Marketing Department implements the strategy, oriented towards the purchaser helps and supports its contractors. It organizes industry events for customers and together with them promotes the BCS brand. Development of the company is based on long-term relationships with suppliers and customers. We offer both the stability of the offer, as well as many novelties and innovations. Aspiring to the role of a Partner and not just a supplier, we have created for our customers the "BCS for Professionals" programme.

Including subsidiaries, the company employs close to 100 people, competent and ready to serve buyers and users of BCS. Our service is offered in Polish, English, Ukrainian and Russian.

We invite you to cooperation

Tubic cameras	3
Dome cameras	5
NVR Recorders	7
Analog HD System – Tube cameras	10
System Analog HD – Dome cameras	12
System Analog HD – XVR recorders	15
Switche PoE	17
Accessories – IP System	21
Accessories – Analog HD System	22
Accessories	23
UTP Cabels	24
All-In-One CCTV Tester	25
Infrared Illuminator	26
HDMI Extension Cable Using Two Strands	27

NEW

BCS MANAGER

17

Features and functions of the application:

live view

playback

logi and notifications

e-map

routes and tasks

alarm rules

PC-NVR

subtitles (POS)

cloud support (P2P) BCS

additional functions

licenses

BCS[®]

for professionals



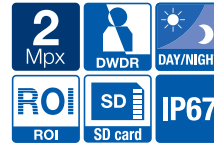
BCS-B-TI415IR3



- 1/3" 4 Mpx PS CMOS sensor
- H.265+/H.264/MJPEG video compression
- Support for two video streams
- 20 fps at 4 Mpx (2560 × 1440)
- Support for ICR Day/Night
- Built-in infrared illuminator up to 30 m
- Function of extended dynamics WDR 120dB, 3DNR, BLC
- ROI function
- 2.8~12 mm motozoom lens, F1.6
- Micro SD card slot max 128GB, ANR
- IP67 housing
- Power supply 12V DC ± 25%, PoE (802.3af)



BCS-B-TI215IR3



- 1/2.8" 2 Mpx PS CMOS sensor
- H.265+/H.264/MJPEG video compression
- Support for two video streams
- 25/30 fps at 2 Mpx (1920 × 1080)
- Support for ICR Day/Night
- Built-in infrared illuminator up to 30 m
- Function of extended dynamic DWDR, 3DNR, BLC
- ROI function
- 2.8~12 mm motozoom lens, F1.6
- Micro SD card slot max 128GB, ANR
- IP67 housing
- Power supply 12V DC ± 25%, PoE (802.3af)

BCS-B-TI213IR2



- 1/2.8" 2 Mpx PS CMOS sensor
- H.265+/H.264/MJPEG video compression
- Support for two video streams
- 25/30 fps at 2 Mpx (1920 × 1080)
- Support for ICR Day/Night
- Built-in infrared illuminator up to 20 m
- Function of extended dynamic DWDR, 3DNR, BLC
- ROI function
- Lens 2.8~8 mm, F1.9
- Micro SD card slot max 128GB, ANR
- Built-in microphone, BNC video output
- IP66 housing
- Power supply 12V DC ± 25%, PoE (802.3af)

BCS-B-TI411IR3



- 1/3" 4 Mpx PS CMOS sensor
- H.265+/H.264/MJPEG video compression
- Support for two video streams
- 20 fps at 4 Mpx (2560 × 1440)
- Support for ICR Day/Night
- Built-in infrared illuminator up to 30 m
- Function of extended dynamics WDR 120dB, 3DNR, BLC
- ROI function
- Lens 2.8 mm, F2.0
- IP67 housing
- Power supply 12V DC ± 25%, PoE (802.3af)



BCS-B-TI211IR3



- 1/2.8" 2 Mpx PS CMOS sensor
- H.265+/H.264/MJPEG video compression
- Support for two video streams
- 25/30 fps at 2 Mpx (1920 × 1080)
- Support for ICR Day/Night
- Built-in infrared illuminator up to 30 m
- Function of extended dynamic DWDR, 3DNR, BLC
- ROI function
- Lens 2.8 mm, F2.0
- IP67 housing
- Power supply 12V DC ± 25%, PoE (802.3af)



BCS-B-EI415IR3



- 1/3" 4 Mpx PS CMOS sensor
- H.265+/H.264/MJPEG video compression
- Support for two video streams
- 20 fps at 4 Mpx (2560 × 1440)
- Support for ICR Day/Night
- Built-in infrared illuminator up to 30 m
- Function of extended dynamics WDR 120dB, 3DNR, BLC
- ROI function
- 2.8~12 mm motozoom lens, F1.6
- Micro SD card slot max 128GB, ANR
- IP67 housing
- Power supply 12V DC ± 25%, PoE (802.3af)



BCS-B-EI411IR3



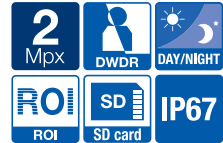
- 1/3" 4 Mpx PS CMOS sensor
- H.265+/H.264/MJPEG video compression
- Support for two video streams
- 20 fps at 4 Mpx (2560 × 1440)
- Support for ICR Day/Night
- Built-in infrared illuminator up to 30 m
- Function of extended dynamics WDR 120dB, 3DNR, BLC
- ROI function
- Lens 2.8 mm, F2.0
- IP67 housing
- Power supply 12V DC ± 25%, PoE (802.3af)



BCS-B-EI215IR3



- 1/2.7" 2 Mpx PS CMOS sensor
- H.265+/H.264/MJPEG video compression
- Support for two video streams
- 25/30 fps at 2 Mpx (1920 × 1080)
- Support for ICR Day/Night
- Built-in infrared illuminator up to 30 m
- Function of extended dynamic DWDR, 3DNR, BLC
- ROI function
- 2.8~12 mm motozoom lens, F1.6
- Micro SD card slot max 128GB, ANR
- IP67 housing
- Power supply 12V DC ± 25%, PoE (802.3af)



BCS-B-EI211IR3



- 1/2.8" 2 Mpx PS CMOS sensor
- H.265+/H.264/MJPEG video compression
- Support for two video streams
- 25/30 fps at 2 Mpx (1920 × 1080)
- Support for ICR Day/Night
- Built-in infrared illuminator up to 30 m
- Function of extended dynamic DWDR, 3DNR, BLC
- ROI function
- Lens 2.8 mm, F2.0
- IP67 housing
- Power supply 12V DC ± 25%, PoE (802.3af)





IP VIDEO MONITORING LIBRARY

New edition of BCS CAD library
available in a FREE version

Find out more on our website
www.bcsctv.pl

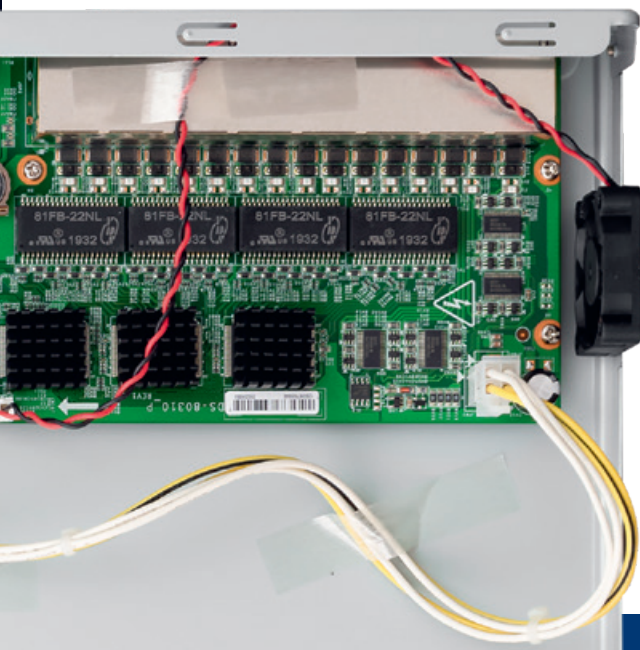


FREE!

Powered by **CADprofi®**

BCS-B-NVR1602-16P

BCS-B-NVR1602



16
CHANNELS

2
DISCS

- Recording up to 16 IP cameras max. 8 Mpx
- Ultra H.265+/H.265/H.264+/H.264 video compression
- Independent operation of HDMI/VGA outputs
- HDMI output with 4K resolution (3840 × 2160)
- Support for Smart Functions
- Support for 2 SATA drives up to 6TB each
- 2 USB 2.0 ports; Audio input/output
- Network: 1× RJ-45 (10/100/1000 Mbit/s)
- Input/output bitrate bandwidth: 160/80 Mbps
- Built-in 16-port PoE 802.3 at/af switch (-16P version)
- Web management: Web Service, BCS Basic Manager, BCS Manager, P2P
- Power supply 12V, 240 AC (version -16P)



BCS-B-NVR1601



16
KANALÓW

1
DISC

- Recording up to 16 IP cameras max. 8 Mpx
- Ultra H.265+/H.265/H.264+/H.264 video compression
- Independent operation of HDMI/VGA outputs
- HDMI output with 4K resolution (3840 × 2160)
- Support for Smart Functions
- Support for 1 SATA drive up to 6TB
- 2 USB 2.0 ports; Audio input/output
- Network: 1× RJ-45 (10/100/1000 Mbit/s)
- Input/output bitrate bandwidth: 160/80 Mbps
- Web management: Web Service, BCS Basic Manager, BCS Manager, P2P
- 12V power supply

BCS-B-NVR0801-8P

BCS-B-NVR0801



8
CHANNELS

1
DISC

- Recording up to 8 IP cameras max. 8 Mpx
- Ultra H.265+/H.265/H.264+/H.264 video compression
- Independent operation of HDMI/VGA outputs
- HDMI output with 4K resolution (3840 × 2160)
- Support for Smart Functions
- Support for 1 SATA drive up to 6TB
- 2 USB 2.0 ports; Audio input/output
- Network: 1× RJ-45 (10/100/1000 Mbit/s)
- Input/output bitrate bandwidth: 80/80 Mbps
- Built-in 8-port PoE 802.3 at/af switch (-8P version)
- Web management: Web Service, BCS Basic Manager, BCS Manager, P2P
- Power supply 12V, 48 V (version -8P)

BCS-B-NVR0401-4P

BCS-B-NVR0401



- Recording up to 4 IP cameras max. 8 Mpx
- Ultra H.265+/H.265/H.264+/H.264 video compression
- Simultaneous operation of HDMI/VGA outputs
- HDMI output with 4K resolution (3840x2160)
- Support for Smart Functions
- Support for 1 SATA drive up to 6TB
- 2 USB 2.0 ports; Audio input/output
- Network: 1× RJ-45 (10/100/1000 Mbit/s)
- Input/output bitrate bandwidth: 40/80 Mbps
- Built-in 4-port PoE 802.3 at/af switch (-4P version)
- Web management: Web Service, BCS Basic Manager, BCS Manager, P2P
- 12V, 48V power supply (-4P version)

BCS-B-SNVR0801

BCS-B-SNVR0401



- Recording up to 8/4 IP cameras max. 4 Mpx
- Ultra H.265+/H.265/H.264+/H.264 video compression
- Simultaneous operation of HDMI/VGA outputs
- HDMI/VGA output with 1920 × 1080p resolution
- Support for Smart Functions
- Support for 1 SATA drive up to 6TB
- 2 USB 2.0 ports
- Network: 1× RJ-45 (10/100 Mbit/s)
- Input/output bitrate bandwidth 8 Ch: 60/60 Mbps
- Input/output bitrate bandwidth 4 Ch: 40/60 Mbps
- Web management: Web Service, BCS Basic Manager, BCS Manager, P2P
- 12V power supply

BCS-B-DT82812(II)



- Resolution 8 Mpx (3840 * 2160)
- Support for HD-CVI+HD-TVI+AHD+ANALOG standard
- 1/2.3" CMOS sensor
- 2.8-12 mm varifocal lens
- Infrared illuminator with a range of up to 40 m in SMD LED technology
- IP66 outdoor housing
- 12V DC power supply



BCS-B-DT42812(II)



- 4 Mpx resolution (2560 * 1440)
- Support for HD-CVI+HD-TVI+AHD+ANALOG standard
- 1/2.7" CMOS sensor
- 2.8-12 mm varifocal lens
- Infrared illuminator with a range of up to 40 m in SMD LED technology
- IP66 outdoor housing
- 12V DC power supply



BCS-B-DT22812(II)

BCS-B-DT22812-B(II)



- Resolution 2 Mpx (1920 * 1080)
- Support for HD-CVI+HD-TVI+AHD+ANALOG standard
- 1/2.9" CMOS sensor
- 2.8-12 mm varifocal lens
- Infrared illuminator with a range of up to 40 m in SMD LED technology
- IP66 outdoor housing
- 12V DC power supply



BCS-B-MT82800



- Resolution 8 Mpx (3840 * 2160)
- Support for HD-CVI+HD-TVI+AHD+ANALOG standard
- 1/2.3" CMOS sensor
- Lens 2.8 mm
- Infrared illuminator with a range of up to 30 m in SMD LED technology
- IP66 outdoor housing
- 12V DC power supply



BCS-B-MT42800



- 4 Mpx resolution (2560 * 1440)
- Support for HD-CVI+HD-TVI+AHD+ANALOG standard
- 1/2.7" CMOS sensor
- Lens 2.8 mm
- Infrared illuminator with a range of up to 30 m in SMD LED technology
- IP66 outdoor housing
- 12V DC power supply



BCS-B-MT22800

BCS-B-MT22800-B



- Resolution 2 Mpx (1920 * 1080)
- Support for HD-CVI+HD-TVI+AHD+ANALOG standard
- 1/2.9" CMOS sensor
- Lens 2.8 mm
- Infrared illuminator with a range of up to 30 m in SMD LED technology
- IP66 outdoor housing
- 12V DC power supply



BCS-B-DK82812



- Resolution 8 Mpx (3840 * 2160)
- Support for HD-CVI+HD-TVI+AHD+ANALOG standard
- 1/2.3" CMOS sensor
- 2.8-12 mm varifocal lens
- Infrared illuminator with a range of up to 40 m in SMD LED technology
- IP66 outdoor housing
- 12V DC power supply



BCS-B-DK42812



- 4 Mpx resolution (2560 * 1440)
- Support for HD-CVI+HD-TVI+AHD+ANALOG standard
- 1/2.7" CMOS sensor
- 2.8-12 mm varifocal lens
- Infrared illuminator with a range of up to 40 m in SMD LED technology
- IP66 outdoor housing
- 12V DC power supply

BCS-B-DK22812

BCS-B-DK22812-B



- Resolution 2 Mpx (1920 * 1080)
- Support for HD-CVI+HD-TVI+AHD+ANALOG standard
- 1/2.9" CMOS sensor
- 2.8-12 mm varifocal lens
- Infrared illuminator with a range of up to 40 m in SMD LED technology
- IP66 outdoor housing
- 12V DC power supply



BCS-B-MK82800



- Resolution 8 Mpx (3840 * 2160)
- Support for HD-CVI+HD-TVI+AHD+ANALOG standard
- 1/2.3" CMOS sensor
- Lens 2.8 mm
- Infrared illuminator with a range of up to 30 m in SMD LED technology
- IP66 outdoor housing
- 12V DC power supply



BCS-B-MK42800



- 4 Mpx resolution (2560 * 1440)
- Support for HD-CVI+HD-TVI+AHD+ANALOG standard
- 1/2.7" CMOS sensor
- Lens 2.8 mm
- Infrared illuminator with a range of up to 30 m in SMD LED technology
- IP66 outdoor housing
- 12V DC power supply



BCS-B-MK22800

BCS-B-MK22800-B



- Resolution 2 Mpx (1920 * 1080)
- Support for D-CVI+HD-TVI+AHD+ANALOG standard
- 1/2.9" CMOS sensor
- Lens 2.8 mm
- Infrared illuminator with a range of up to 30 m in SMD LED technology
- IP66 outdoor housing
- 12V DC power supply



Reliable devices for every installer

BCS[®]

for professionals



BCS-B-XVR1602-4KE(II)



16
CHANNELS

2
DISCS

- Record up to 16 HDCVI/TVI/AHD/Analog cameras
- Maximum 32 IP channels up to 8 Mpx
- H.265 Pro+/H.265 Pro/H.265/H264 video compression
- Support for TVI cameras - 8 Mpx, AHD - 5 Mpx, HDCVI - 4 Mpx
- Simultaneous operation of HDMI/VGA outputs
- HDMI output with 4K resolution (3840 × 2160)
- Intelligent functions: line crossing, intruder, scene change detection
- Support for 2 SATA drives up to 10TB each
- 2 USB ports (1 × USB3.0, 1 × USB2.0), Audio Input and Output
- Network: 1 × RJ45 10/100/1000 Mbps
- Web management: Web Service, BCS Basic Manager, BCS Manager, P2P
- 12V power supply

BCS-B-XVR0801-4KE(II)



8
CHANNELS

1
DISC

- Record up to 8 HDCVI/TVI/AHD/Analog cameras
- Maximum of 16 IP channels up to 8 Mpx
- H.265 Pro+/H.265 Pro/H.265/H264 video compression
- Support for TVI cameras - 8 Mpx, AHD - 5 Mpx, HDCVI - 4 Mpx
- Simultaneous operation of HDMI/VGA outputs
- HDMI output with 4K resolution (3840 × 2160)
- Intelligent functions: line crossing, intruder, scene change detection
- Support for 1 SATA disk up to 10TB
- 2 USB 2.0 ports, Audio Input and Output
- Network: 1 × RJ45 10/100/1000 Mbps
- Web management: Web Service, BCS Basic Manager, BCS Manager, P2P
- 12V power supply



BCS-B-XVR0401-5M(II)



4
CHANNELS

1
DISC

- Recording of up to 4 HDCVI/TVI/AHD/Analog cameras
- Maximum of 8 IP channels up to 8 Mpx
- H.265 Pro+/H.265 Pro/H.265/H264 video compression
- Support for cameras in HDCVI/TVI/AHD up to 5 Mpx
- Simultaneous operation of HDMI/VGA outputs
- HDMI/VGA output with 1920 × 1080p resolution
- Support for 1 SATA disk up to 10TB
- 2 USB 2.0 ports, Audio Input and Output
- Network: 1 × RJ45 10/100 Mbps
- Web management: Web Service, BCS Basic Manager, BCS Manager, P2P
- 12V power supply

BCS-B-XVR1602



16
CHANNELS

2
DISCS

- Record up to 16 HDCVI/TVI/AHD/Analog cameras
- Maximum 24 IP channels up to 6 Mpx
- H.265 Pro+/H.265 Pro/H.265/H264 video compression
- Support for cameras in HDCVI/TVI/AHD up to 4 Mpx
- Simultaneous operation of HDMI/VGA outputs
- HDMI output with 4K resolution (3840 × 2160)
- Support for 2 SATA drives up to 10TB each
- 2 USB ports (1 × USB3.0, 1 × USB2.0), Audio Input and Output
- Network: 1 × RJ45 10/100/1000 Mbps
- Web management: Web Service, BCS Basic Manager, BCS Manager, P2P
- 12V power supply

BCS-B-XVR1601

BCS-B-XVR0801(II)

BCS-B-XVR0401(II)



16	8	4	1
CHANNELS	CHANNELS	CHANNELS	DISC

- Recording of up to 16/8/4 HDCVI/TVI/AHD/Analog cameras
- Maximum 24/12/6 IP channels up to 6 Mpx
- H.265 Pro+/H.265 Pro/H.265/H264 video compression
- Support for cameras in HDCVI/TVI/AHD up to 4 Mpx
- Simultaneous operation of HDMI/VGA outputs
- HDMI output with 4K (3840 × 2160) XVR1601 resolution
- HDMI/VGA output with 1920 × 1080p resolution
- Support for 1 SATA disk up to 10TB
- 2 USB 2.0 ports, Audio Input and Output
- Network: 1 × RJ45 10/100 Mbps; 1000 Mbps - 16ch
- Web management: Web Service, BCS Basic Manager, BCS Manager, P2P
- 12V power supply

BCS-B-SP2402G-2SFP-M



26 port managed switch (PoE)

- 24 PoE 100 Mbps ports
- 2 RJ45 uplink Gigabit ports
- 2 SFP Gigabit fiber ports
- IEEE802.3 af/at standard, Maximum power up to 30W for a single PoE port
- 4 operating modes: AI VLAN, AI EXTEND, AI PoE, AI QoS
- RJ45 port of the management console, menu in Polish
- Built-in web-service
- MDI/MDIX, VLAN functions
- Transmission up to 250 m
- Can be installed in a 1U RACK cabinet
- 100 ~ 240V AC power supply

BCS-B-SP1602G-2SFP-M



18 port managed switch (PoE)

- 16 PoE 100 Mbps ports
- 2 RJ45 uplink Gigabit ports
- 2 SFP Gigabit fiber ports
- IEEE802.3 af/at standard, Maximum power up to 30W for a single PoE port
- RJ45 port of the management console, menu in Polish
- 4 operating modes: AI VLAN, AI EXTEND, AI PoE, AI QoS
- RJ45 management console port
- Built-in web-service
- MDI/MDIX, VLAN functions
- Transmission up to 250 m
- Can be installed in a 1U RACK cabinet
- 100 ~ 240V AC power supply

BCS-B-SP08G-2SFP-M



8 port managed switch (PoE)

- 8 PoE Gigabit ports
- 2 SFP Gigabit fiber ports
- IEEE802.3 af/at standard, Maximum power up to 46W for a single PoE port
- RJ45 management console port
- 4 operating modes: AI VLAN, AI EXTEND, AI PoE, AI QoS
- RJ45 management console port
- Built-in web-service
- MDI/MDIX, VLAN functions
- Transmission up to 250 m
- 100 ~ 240V AC power supply

BCS-B-SP2402G-2SFP(II)



26 port switch (PoE)

- 24 PoE 100 Mbps ports
- 2 RJ45 uplink Gigabit ports
- 2 SFP Gigabit fiber ports
- IEEE802.3 af/at standard, Maximum power up to 30W for a single PoE port
- 3 working modes: AI VLAN, AI EXTEND AI PoE, AI QoS
- MDI/MDIX, VLAN functions
- Transmission up to 250 m
- Can be installed in a 1U RACK cabinet
- 100 ~ 240V AC power supply

BCS-B-SP1602G-2SFP(II)



18 port switch (PoE)

- 16 PoE 100 Mbps ports
- 2 RJ45 uplink Gigabit ports
- 2 SFP Gigabit fiber ports
- IEEE802.3 af/at standard, Maximum power up to 30W for a single PoE port
- 3 working modes: AI VLAN, AI EXTEND AI PoE, AI QoS
- MDI/MDIX, VLAN functions
- Transmission up to 250 m
- Can be installed in a 1U RACK cabinet
- 100 ~ 240V AC power supply



BCS-B-SP08G-2SFP



8 port switch (PoE)

- 8 PoE Gigabit ports
- 2 SFP Gigabit fiber ports
- IEEE802.3 af/at standard, Maximum power up to 30W for a single PoE port
- 4 operating modes: AI VLAN, AI EXTEND, AI PoE, AI QoS
- MDI/MDIX, VLAN functions
- Transmission up to 250 m
- 52V DC 1.85A power adapter included

BCS-B-SP08G02G



10 port Gigabit switch (PoE)

- 8 PoE Gigabit ports
- 2 RJ45 uplink Gigabit ports
- IEEE802.3 af/at standard, Maximum power up to 30W for a single PoE port
- 4 operating modes: AI VLAN, AI EXTEND, AI PoE, AI QoS
- MDI/MDIX, VLAN functions
- Transmission up to 250 m
- 52V DC 1.85A power adapter included

BCS-B-SP04G02G



6 port Gigabit switch (PoE)

- 4 PoE Gigabit ports
- 2 RJ45 uplink Gigabit ports
- IEEE802.3 af/at standard, Maximum power up to 30W for a single PoE port
- 4 operating modes: AI VLAN, AI EXTEND, AI PoE, AI QoS
- MDI/MDIX, VLAN functions
- Transmission up to 250 m
- 52V DC 1.15A power supply included



BCS-B-SP0802



10 port switch (PoE)

- 8 PoE 100 Mbps ports
- 2 x RJ45 uplink 100 Mbps ports
- IEEE802.3 af/at standard, Maximum power up to 36W for a single PoE port
- 4 operating modes: AI VLAN, AI EXTEND, AI PoE, AI QoS
- MDI/MDIX, VLAN functions
- Transmission up to 250 m
- 52V DC 1.85A power adapter included

BCS-B-SP0402



6 port switch (PoE)

- 4 PoE 100 Mbps ports
- 2 x RJ45 uplink 100 Mbps ports
- IEEE802.3 af/at standard, Maximum power up to 36W for a single PoE port
- 4 operating modes: AI VLAN, AI EXTEND, AI PoE, AI QoS
- MDI/MDIX, VLAN functions
- Transmission up to 250 m
- 52V DC 1.15A power supply included

BCS-B-AWMT



Mounting adapter dedicated to BCS-Basic IP cameras:

- BCS-B-TI411IR3
- BCS-B-TI211IR3

BCS-B-AWDT



Mounting adapter dedicated to BCS-Basic IP cameras:

- BCS-B-TI415IR3
- BCS-B-TI215IR3
- BCS-B-TI213IR2
- BCS-B-EI411IR3
- BCS-B-EI211IR3

BCS-B-AWDE



Mounting adapter dedicated to BCS-Basic IP cameras:

- BCS-B-EI415IR3
- BCS-B-EI215IR3

BCS-B-AT



Mounting adapter dedicated to BCS-Basic IP cameras:

- BCS-B-TI415IR3
- BCS-B-TI215IR3
- BCS-B-TI213IR2

BCS-ATU-B



Universal mounting box for dome and bullet cameras
The model is compatible with both cameras mounted on four and three screws
BCS-ATU-G: graphite color

BCS-AS-ATU-B



External POLE ADAPTER for mounting the BCS-ATU-B mounting box on the pole
Opening according to the accessories of the BCS BASIC line
BCS-AS-ATU-G: graphite color

BCS-ASM-ATU-B



External SMALL POLE ADAPTER for mounting the BCS-ATU-B mounting box on the pole
Opening according to the accessories of the BCS BASIC line
BCS-ASM-ATU-G: graphite color

BCS-ASUD



BCS-ASUD Adapter Słupowy Uniwersalny Duży
Model dostępny tylko w białym kolorze

BCS-ASUM



BCS-ASUM Adapter Słupowy Uniwersalny Mały
Model dostępny tylko w białym kolorze

BCS-PDK3/4



Plastikowy dławik kablowy średnicy 3/4"
do puszek instalacyjnych

BCS-PDK1/2



Plastikowy dławik kablowy średnicy 1/2"
do puszek instalacyjnych

BCS-B-DT/MT BCS-B-DT/MT-B



Installation box for large and small 4 in 1 BCS
BASIC bullet cameras

BCS-B-MK BCS-B-MK-B



Installation box for small (fixed focal length) 4 in 1
BCS BASIC dome cameras

BCS-B-DK



Installation box for large (varifocal) 4 in 1 BCS BASIC
dome cameras

TELESCOPIC CEILING HANDLE

BCS-ARS200



BCS-ARS120



BCS-R100



BCS-U/UTP-CAT5E-PVC



- Unshielded twisted pair
- Vein Material: Copper
- Core diameter: 0.5 mm
- Number of cores: 8
- Coating: PVC
- Class: D
- Application: indoor
- Meets the requirements of PN-EN 50173 ISO/IEC 11801

BCS-U/UTP-CAT6-PVC



- Unshielded twisted pair
- Vein Material: Copper
- Core diameter: 0.55 mm
- Number of cores: 8
- Coating: PVC
- Class: D
- Application: indoor
- Meets the requirements of PN-EN 50173 ISO/IEC 11801

BCS-U/UTP-CAT5E-LSOH



- Unshielded twisted pair
- Vein Material: Copper
- Core diameter: 0.5 mm
- Number of cores: 8
- Coating: LSOH
- Class: D
- Application: indoor
- Meets the requirements of PN-EN 50173 ISO/IEC 11801

BCS-U/UTP-CAT6-LSOH

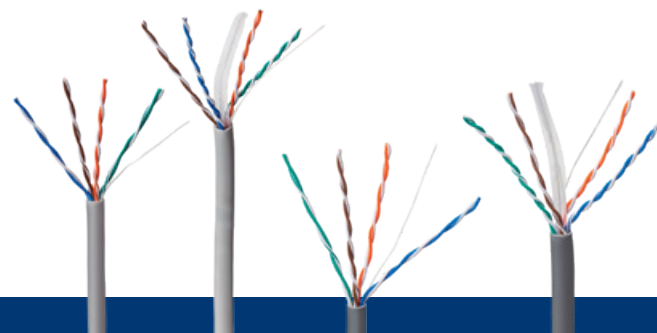


- Unshielded twisted pair
- Vein Material: Copper
- Core diameter: 0.55 mm
- Number of cores: 8
- Coating: LSOH
- Class: D
- Application: indoor
- Meets the requirements of PN-EN 50173 ISO/IEC 11801

BCS-U/UTP-CAT5E-PE



- Unshielded twisted pair
- Vein Material: Copper
- Core diameter: 0.5 mm
- Number of cores: 8
- Coating: PE
- Class: D
- Application: outdoor
- Meets the requirements of PN-EN 50173 ISO/IEC 11801



BCS-MS4.3LCD



All-in-one Service Monitor
 4.3" touch screen, resolution 960 × 540;
 IPC Onvif test; Support and test of IPC
 cameras; Gigabit Ethernet; 8Mpx CVI video
 signal test/AHD/TVI and CVBS; Main display
 H.265/H.264 stream, 4K; Wi-Fi; Entry and
 HDMI 1080p output; DC 12V 2A output and
 DC 48V PoE; Network applications – network
 test; TDR RJ45 test; PoE test; Audio test;
 PTZ control; Media player; 8GB microSD
 card; Power 12V DC; Built-in 7.4V lithium
 battery polymer 5000mAh; Dimensions
 and weight 215 × 127 × 53 mm/0.82kg

BCS-AKU/MS4.3LCD



SPARE BATTERY
 FOR BCS-MS4.3LCD TESTER
 Voltage 7.4V
 Capacity: 4600mAh



BCS-MS7.0LCD



All-in-one Service Monitor
 Touch screen 7" 1920×1200 resolution; IPC Onvif test; Support and test of IPC
 cameras; Gigabit Ethernet; 8 Mpx CVI/AHD/TVI/SDI and CVBS video signal test;
 H.265/H.264, 4K main stream display; Wi-Fi; HDMI 1080p input and 4K HDMI
 output; DC 12V 2A and DC48V PoE output; Network applications – network test;
 Digital Multimeter -V AC/DC, resistance, continuity, diode, capacitance;
 Optical power meter 1625/1550/1490/1310/1300/850nm, -70~+10dBm;
 VFL-10mW/650nm/10KM; TDR UTP/RJ45 test; PoE test; Audio test; PTZ control;
 Media player; 8GB microSD card; 12V DC power supply; Built-in 7.4V Lithium
 Polymer 5000mAh battery; Dimensions and weight 255 × 160 × 46 mm/0.95Kg

BCS-AKU/MS7.0LCD



SPARE BATTERY
 FOR BCS-MS7.0LCD TESTER
 Voltage 7.4V
 Capacity: 5000mAh

BCS-IR45X80

BCS-IR45X80-B



- 45 m range
- 80° beam angle
- 850 nm optical wavelength
- 850 nm optical wavelength
- Twilight switch
- Power supply 12V DC / 0.41A, 24V AC / 0.32A
- Working temperature -30°C ~ 40°C
- Dimensions 205 × 90 × 77 mm
- Weight 0.7 kg

BCS-IR55X60

BCS-IR55X60-B



- 55 m range
- 60° beam angle
- 850 nm optical wavelength
- 850 nm optical wavelength
- Twilight switch
- Power supply 12V DC/0.41A, 24V AC/0.32A
- Working temperature -30°C~40°C
- Dimensions 205 × 90 × 77 mm
- Weight 0.7 kg



BCS-UTP-HDMI-SET



BCS-UTP-HDMI-SET converter set for HDMI signal transmission via UTP cable, transmitter + receiver, supports the solution "Point to point" and "point to multi-point"

BCS-UTP-HDMI-RE



BCS-UTP-HDMI-SET converter set for HDMI signal transmission via UTP cable, transmitter + receiver, supports the solution "Point to point" and "point to multi-point"

BCS-UTP-KVM-1080p



BCS-UTP-HDMI-SET converter set for HDMI signal transmission via UTP cable, transmitter + receiver, supports the solution "Point to point" and "point to multi-point"

BCS-UTP-HDMI-MINI



BCS-UTP-HDMI-MINI converter kit for HDMI signal transmission via UTP cable, transmitter + receiver mini version, supports point to point solution

BCS-COAX-HDMI-SET



BCS-COAX-HDMI-SET converter set for HDMI signal transmission over the coaxial cable, transmitter + receiver, supports the "point to point" solution and "point to multi-point"

BCS-COAX-HDMI-RE



BCS-COAX-HDMI-SET converter set for HDMI signal transmission over the coaxial cable, transmitter + receiver, supports the "point to point" solution and "point to multi-point"

BCS-UTP-USB (SET)



USB extension cable using a twisted pair, The fixing of the UTP cable is carried out with RJ45 plugs

Buy from a trusted BCS partner

Taking care of the quality and level of service, we recommend purchasing from sellers distinguished by this certificate. The certificate is awarded every year to companies that care about the quality of service, have a competent, trained team and technical support. By purchasing these points, you can be sure of a guarantee, quick service, professional advisors and the latest BCS offer. **Check with your dealer for such certificates or stickers.**



BCS BASIC DEVICE NAMING SYSTEM

IP CAMERA

BCS - B - T I 2 3 1 IRx

A **B** **C** **D** **E** **F** **G**

- A** – Fixed designation for BCS BASIC products
- B** – Value defining the type of housing (T - tube, E - truncated dome)
- C** – Permanent marking for all IP cameras of the BCS BASIC series
- D** – Value determining camera resolution in mpx (2, 4)
- E** – The value that specifies the camera series (1 - basic, 2 - standard, 3 - professional, 1 for BCS BASIC, 2 and 3 for BCS VIEW)
- F** – The value that specifies the type of lens (1 - fixed lens, 2 - fixed lens+functions, 3 - manually adjustable lens, 4 - manually adjustable lens+features, 5 - motozoom)
- G** – Value informing about the infrared illuminator (a digit behind the IR illuminator, e.g. 4 indicates the range of the illuminator of 40 m)

ANALOG HD CAMERAS

BCS - B - DK 2 2812 - B

A **B** **C** **D** **E**

- A** – Fixed designation for BCS BASIC products
- B** – Value defining the type of housing (DK - large dome, MK - small dome, DT - large dome, MT - small dome)
- C** – The value that specifies the camera resolution in mpx (2, 4, 8)
- D** – The value that specifies the lens (2812 - adjustable 2.8-12 mm, 0028 - fixed 2.8 mm)
- E** – The mark informing about the colour of housing (B - white)

BCS BASIC

SWITCH-E PoE

BCS - B - SP 08 G 02 G - 2FSP - M

A **B** **C** **D** **E** **F** **G** **H**

- A** – Permanent marking for BCS BASIC products
- B** – Switch PoE designation
- C** – Value defining the number of PoE ports
- D** – Marking G is used in switches where PoE port capacity is 1000 Mb/s (Gigabit), if it is 100 Mb/s in this place in the symbol there is no designation
- E** – Value determining the number of UPLINK ports
- F** – G is used in switches where the throughput of the UPLINK port is 1000 Mb/s (Gigabit), if it is 100 Mb/s there is no marking in the symbol there is no marking
- G** – Marking informing about equipping switch is equipped with two SFP sockets
- H** – Marking informing about the managed version of the switch



We connect yours security

BCS-L-SP1602G-2SFP
BCS-L-SP2402G-2SFP



“Series of BCS Line network switches
For use in electronic security systems,
this new quality in data transmission.
Speed, power and reliability are Distinguishing
Features of Switches BCS.”



BCS-L-SP0401G-1SFP
BCS-L-SP0801G-1SFP

BCS[®]

for professionals

www.bcscctv.pl

NSS Sp. z o.o.

11 Modularna St. (Hall IV), 02-238 Warsaw
tel. +48 22 846 25 31, fax. +48 22 846 23 31 ext.140
e-mail: info@bcscctv.pl, NIP: 521-312-46-74

BCS[®]

for professionals



www.bcscctv.pl

NSS Sp. z o.o. 11 Modułama St. (Hall IV), 02-238 Warsaw
tel. +48 22 846 25 31, fax. +48 22 846 23 31 ext.140
e-mail: info@bcscctv.pl, NIP: 521-312-46-74